

# DEVELOPMENT AND ITS PRINCIPLES

---

DR. ANURADHA RAI

ASSOCIATE PROFESSOR (B.ED)

HARISH CHANDRA P G COLLEGE VARANASI

# WHAT IS DEVELOPMENT

---

- Development means a progressive change.
- Development in human is all about changes starts from the cell evolution (sperm and ovum) till the end of life .
- It is a process which occurs step by step, following the principles of development.

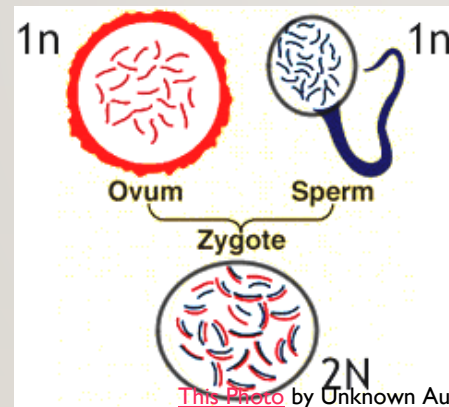
# DEFINITIONS OF DEVELOPMENT

---

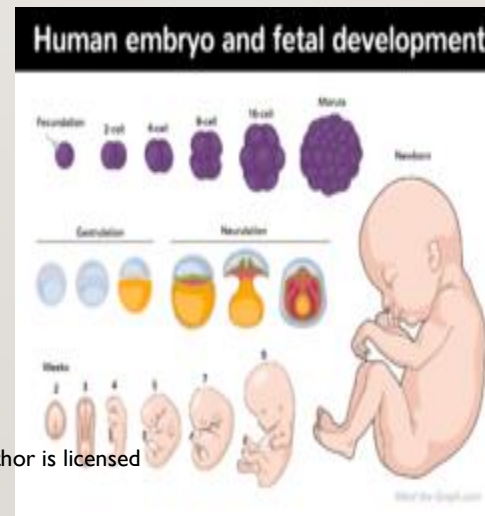
- In the words of Elizabeth Hurlock, ' the term development means **progressive series** of changes that occur in an **orderly predictable pattern** as a result of **maturation** and **experience**'.
- **According** to J.E. Anderson(1950) • **Development** is concerned with growth as well as those **changes in behavior** which results from **environmental situations**
- According to Liebert, Poulos and Marmor (1979) • Development refers to a process of change in growth and capability over time, as function of both **maturation** and interaction with the **environment**

# PRINCIPLES OF DEVELOPMENT

- It is a continuous process.
- It is progressive , orderly and coherent



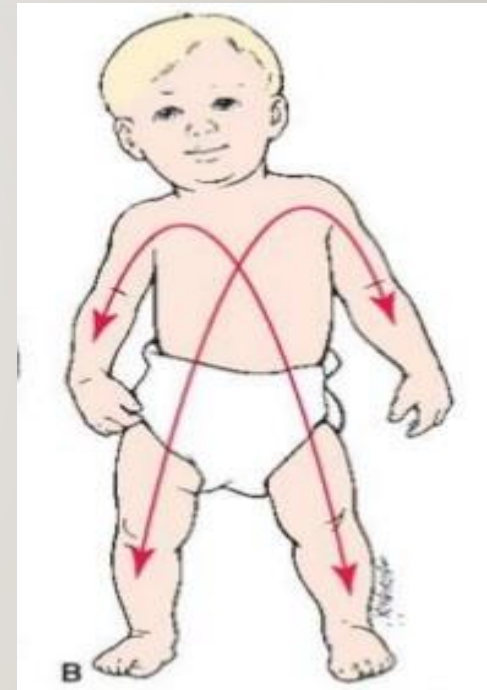
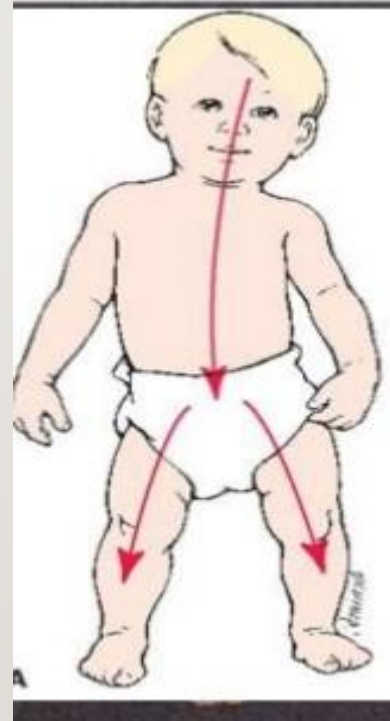
This Photo by Unknown Author is licensed under [CC BY-SA](https://creativecommons.org/licenses/by-sa/4.0/)



# DEVELOPMENT FOLLOWS A SEQUENCE

---

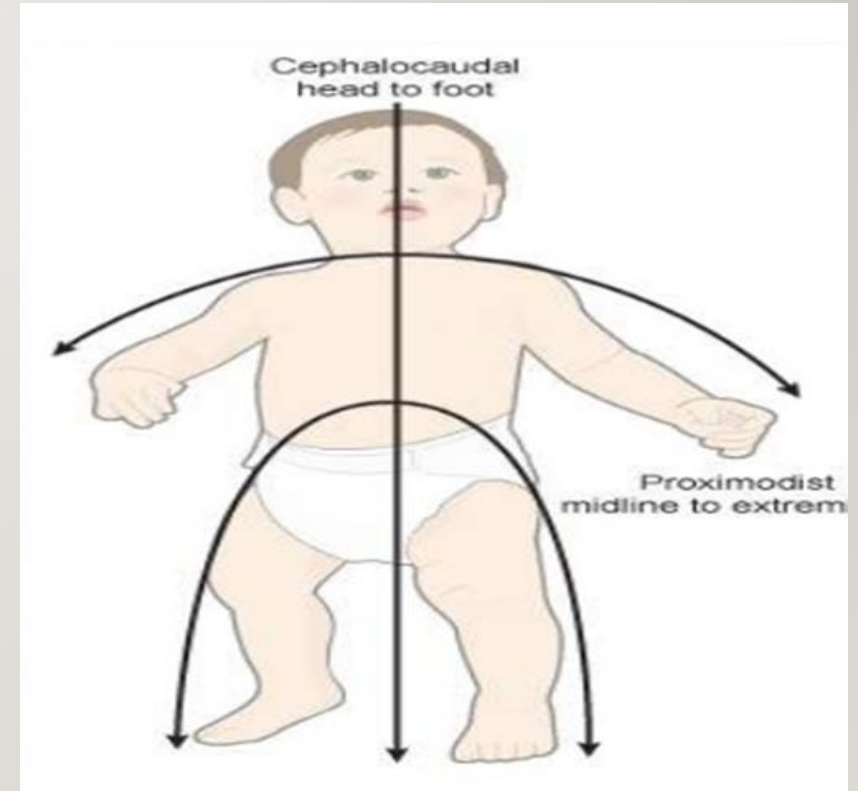
- CEPHALUCOUDAL direction
- The process of cephalocaudal direction from head down to tail. This means that improvement in structure and function come first in the head region, then in the trunk, and last in the leg region.



# PROXIMODISTAL DIRECTION

---

- Proximodistal direction The process in proximodistal from center or midline to periphery direction. development proceeds from near to far - outward from central axis of the body toward the extremities



# DEVELOPMENT FOLLOWS SEQUENCE OF

---

- **General To Specific**

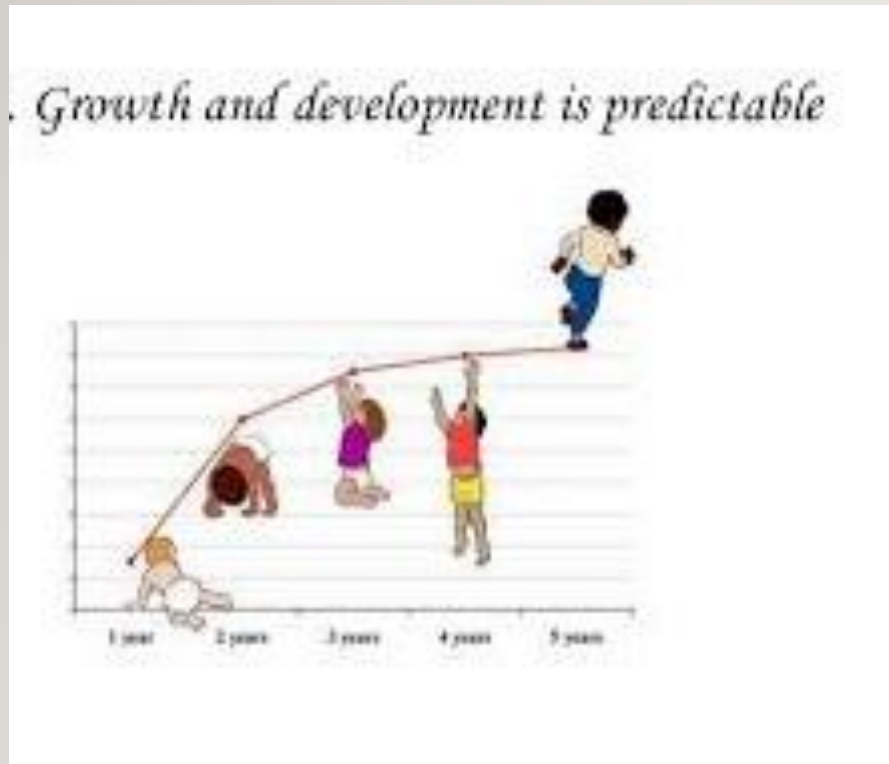
- Individual exhibits general responses and learn to show specific and goal directed responses afterwards.
- For instance, when a newborn infant cries , his whole body is involved in doing so but as he develops , it is limited to the vocal cords, facial expressions, and eyes etc.

- **Bilateral To Unilateral**



# DEVELOPMENT IS PREDICTABLE

---

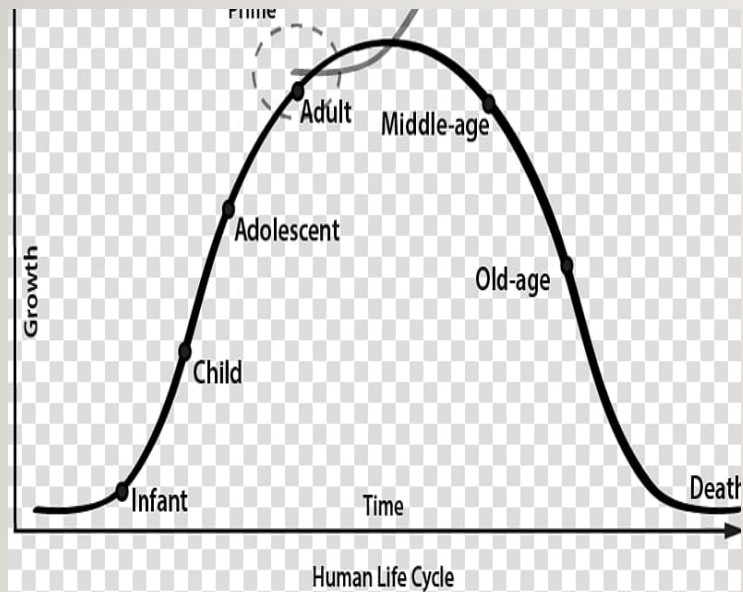


- Development is the same for all children, but the rate of development varies from child to child. It is common for all to a certain extent then differentiate individual to individual depending on the heredity and environment,



# DEVELOPMENT FOLLOWS A BELL SHAPED CURVE

---



# SOME OTHER PRINCIPLES

---

- Development of all aspects and all stages are interrelated
- Development is a product of contribution of Heredity and Environment. Development is a result of interaction of Maturation and Learning

